

Mental Mathematics - Set F - Test 1

I am going to start with the practice question. I will then ask you 30 questions for the test. You will see a box on your answer sheet to write your answer. For some questions there will be some information on the sheet to help you.

I will read each question twice, and then you will have some time to work out the answer and write it down.

Here is the Practice Question. You will have 5 seconds to complete this question.

	P	Write three quarters as a decimal
--	----------	--

Put your pens or pencils down. The answer is ...0.75..... Are there any questions?

Now we are ready to start the test. For the first group of questions you will have 5 seconds to work out each answer and write it down.

Answer	Question Number	Question
--------	-----------------	----------

Answer	Question Number	Question
800	1	Approximate the number shown to one significant figure.
>	2	Write in the correct symbol to make the sum correct.
2 / 5	3	Write the fraction eighteen over forty-five in its simplest form.
35%	4	Charlotte obtained thirty five out of fifty in her maths test. What percentage is this?
5	5	Write in the missing number in the sequence shown?
10	6	If w equals two and y equals five write down the value of wy ?
3 : 2	7	Write the ratio shown in its simplest form
100/	8	Circle the approximate capacity of a water storage tank
25	9	What number is the arrow pointing to?
acute	10	What is the name of the angle shown?

For the next group of questions you will have 10 seconds to work out each answer and write it down.

Mental Mathematics - Set F - Test 1

Answer	Question Number	Question
20	11	Circle which answer you think is the best estimation to the sum six hundred and thirty-three divided by thirty-one?
9	12	In Lucy's wardrobe, her skirts and dresses are in the ratio of three to four. Lucy has twelve dresses, how many skirts does she have?
4	13	David walks six kilometres in one and a half hours? What is his average speed?
25	14	The three angles shown are 105° , 110° and 120° . What is the missing angle?
3	15	The small shape has been enlarged to the big shape shown. What is the scale of enlargement?
225	16	Circle the bearing that would be the equivalent of travelling South West
6	17	What is the mean of the numbers shown?
Positive	18	What type of correlation can be used to describe the weights and heights of giraffes?
$\frac{1}{2}$ or $\frac{3}{6}$	19	What is the probability of throwing a prime number with one die?
10	20	How many people wore glasses?

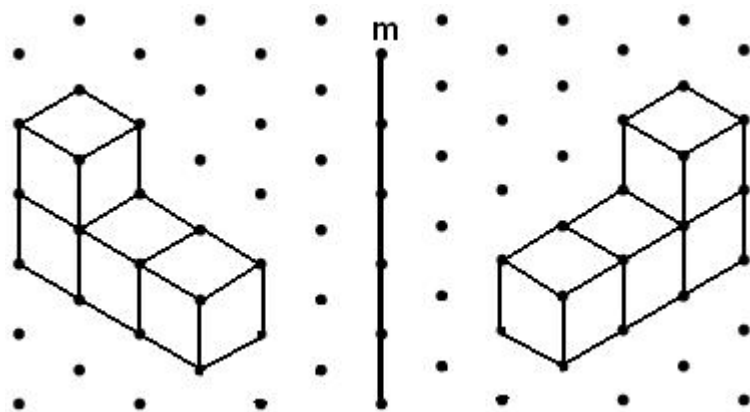
For the next group of questions you will have 15 seconds to work out each answer and write it down.

Answer	Question Number	Question
20	21	What is the new total if twelve is increased by two-thirds?
$y=2x-2$	22	What is the equation of the line shown on the axis?
15	23	How many sixths are there in two and a half?
15	24	The ratio of boys to girls in Santiago's class is four to five. The class has twenty-seven students, how many are girls?
4	25	The mean of the seven numbers is five. What is the missing number?
See Below	26	Reflect the isometric shape in the mirror line m
2.6	27	Solve the equation $5x + 3 = 10$. Write your answer as a decimal
72	28	There are thirty students in a dance class. Twenty four are girls, and six are boys. What size angle on the pie chart do the boys represent?
47cm^2	29	What is the area of the shape?
$2 \times 2 \times 2 \times 3$	30	Write twenty-four using prime factors.

'Put your pens down. The test is over.'

Answer to 26

Mental Mathematics - Set F - Test 1



Mental Mathematics - Set F - Test 1

First Name :	
Last Name :	
Teacher :	Class :

Total

P

Marked by _____

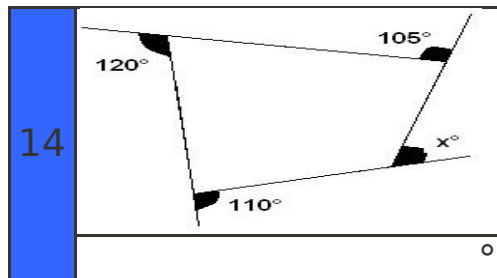
Answer	
1	836

Mark	
<input type="checkbox"/>	

Answer	
13	km/h

Mark	
<input type="checkbox"/>	

2	0.6	0.47	< >
----------	-----	------	-----



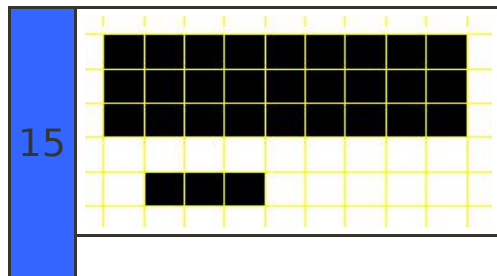
3	18/45
----------	-------

4	%
----------	---

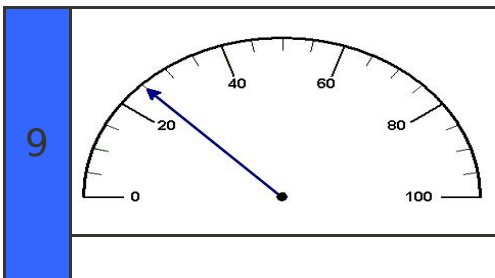
5	2, , 8, 11
----------	------------

6	wy
----------	----

7	24 : 16
----------	---------

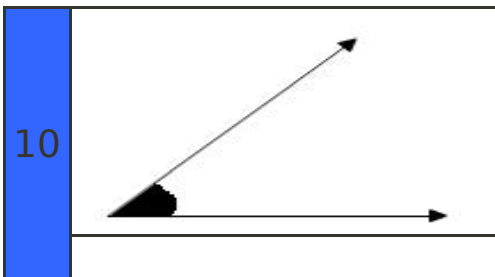


8	1000kg 100ml 100l
----------	-------------------



16	135° 225° 315°
-----------	----------------

17	3, 3, 5, 6, 13
-----------	----------------



18	correlation
-----------	--------------------

19	
-----------	--

11	2 3 20 30
-----------	-----------

20

	Boys	Girls
With glasses	4	6
Without glasses	10	9

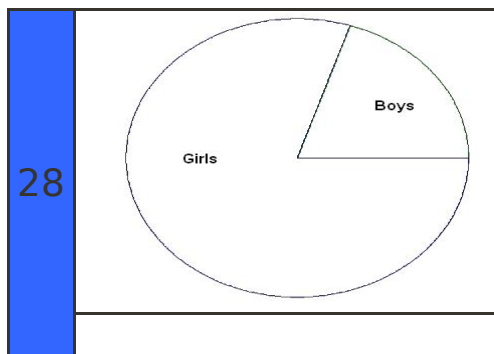
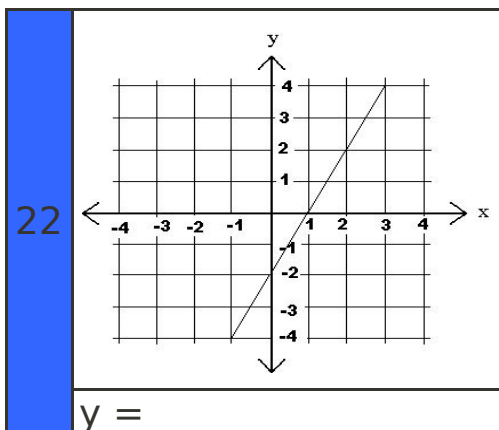
12	3 : 4
-----------	--------------

Side 2 - Set F - Test 1

21 12



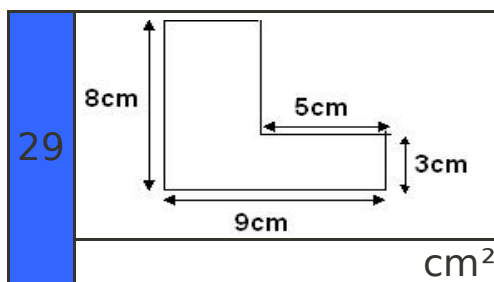
27 $5x + 3 = 10$



23 $2\frac{1}{2}$



24 4 : 5



25 1 3 5 6 7 9 ?



30

